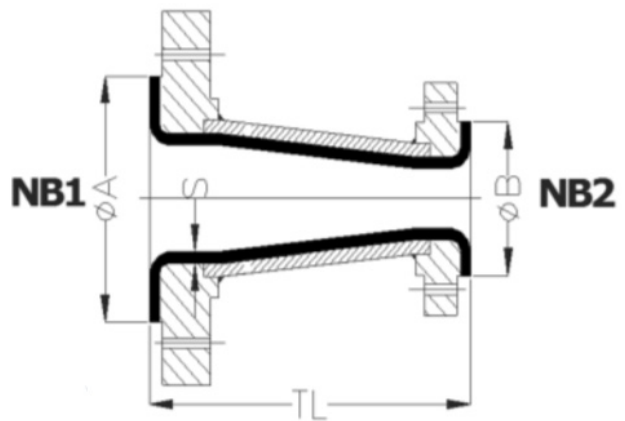


KENOVEL[®]

REDUCTION CONCENTRIQUE



MATIERE :

- Réduction : sans soudure en A234 grd WPB CS ou fonte selon ASTM A395
- Brides : A105 selon ANSI B 16.5 #150
- Revêtement Teflon[®] (Dupont de Nemours) selon ASTM D4895

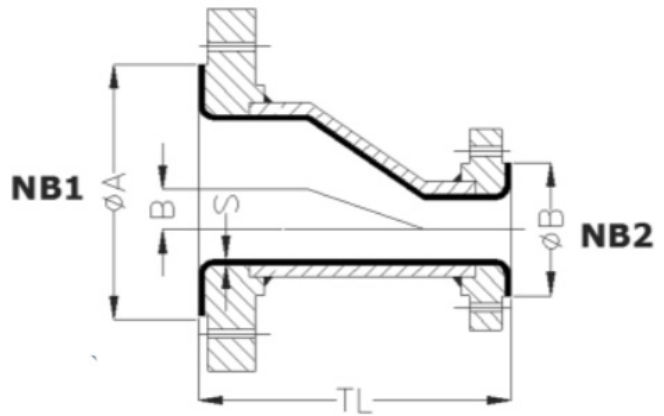
FABRICATION :

- Revêtement PTFE et test selon ASTM F1545 (2009)
- Tuyau acier peint de 2 couches d'oxyde époxy rouge, ou tuyau inox
- Brides fixes

| DN | Nomenclature | A | B | Epaisseur PTFE min | TL | Matière du liner | Matière du coude | Type de bride | Dépression admissible |
|-----------|-----------------|-----|-----|--------------------|-----|------------------|------------------|---------------|-----------------------|
| | | mm | mm | mm | mm | | | | mmCE/*F |
| 1"x 1/2" | LPS-1006-1X0.5 | 51 | 35 | 3.5 | 114 | PTFE | Acier | Fixe | FV/450 |
| 1"x 3/4" | LPS-1006-1X0.75 | 51 | 43 | 3.5 | 114 | | Fonte | | |
| 1"1/2x 1" | LPS-1006-1.5X1 | 73 | 51 | 3.5 | 114 | | Acier | | |
| 2"x1"1/2 | LPS-1006-2X1.5 | 92 | 73 | 4.3 | 127 | | Fonte | | |
| 2"x 1" | LPS-1012-2X1 | 88 | 48 | 4.1 | 127 | | Acier | | |
| 3"x 1" | LPS-1012-3X1 | 118 | 48 | 5 | 152 | | Fonte | | |
| 3"x 1"1/2 | LPS-1012-3X1.5 | 118 | 69 | 5 | 152 | | Acier | | |
| 3"x 2" | LPS-1006-3X2 | 127 | 92 | 4.4 | 152 | | Fonte | | |
| 4"x 1" | LPS-1012-4X1 | 151 | 48 | 6 | 178 | | Acier | | |
| 4"x 1"1/2 | LPS-1012-4X1.5 | 151 | 69 | 6 | 178 | | Fonte | | |
| 4"x 2" | LPS-1012-4X2 | 151 | 88 | 6 | 178 | | Acier | | |
| 4"x 3" | LPS-1006-4X3 | 157 | 127 | 4.4 | 178 | | Fonte | | |
| 6"x 1" | LPS-1012-6X1 | 204 | 48 | 7 | 229 | | Acier | | |
| 6"x1"1/2 | LPS-1012-6X1.5 | 204 | 69 | 7 | 229 | | Fonte | | |
| 6"x 2" | LPS-1012-6X2 | 204 | 88 | 7 | 229 | | Acier | | |
| 6"x3" | LPS-1012-6X3 | 204 | 118 | 7 | 229 | | Fonte | | |
| 6"x 4" | LPS-1006-6X4 | 216 | 151 | 5.5 | 229 | | Acier | | |
| 8"x 3" | LPS-1012-8X3 | 256 | 118 | 8 | 279 | | Fonte | | |
| 8"x 4" | LPS-1012-8X4 | 256 | 151 | 8 | 279 | | Acier | | |
| 8"x 6" | LPS-1006-8X6 | 270 | 216 | 6 | 279 | | Fonte | | |
| 10"x 6" | LPS-1006-10X6 | 312 | 204 | 8.1 | 305 | Acier | | | |
| 10"x 8" | LPS-1006-10X8 | 324 | 270 | 7.5 | 305 | Fonte | | | |
| 12"x 6" | LPS-1012-12X6 | 376 | 204 | 10.8 | 356 | Acier | | | |
| 12"x 8" | LPS-1006-12X8 | 376 | 270 | 10.8 | 356 | Fonte | | | |
| 12"x 10" | LPS-1006-12X10 | 381 | 324 | 10.8 | 356 | Acier | | | |
| | | | | | | | | | Pas adapté au vide |

KENOVEL[®]

REDUCTION EXCENTRIQUE



MATIERE :

- Réduction : sans soudure en A234 grd WPB CS
- Brides : A105 selon ANSI B 16.5 #150
- Revêtement Teflon[®] (Dupont de Nemours) selon ASTM D4895

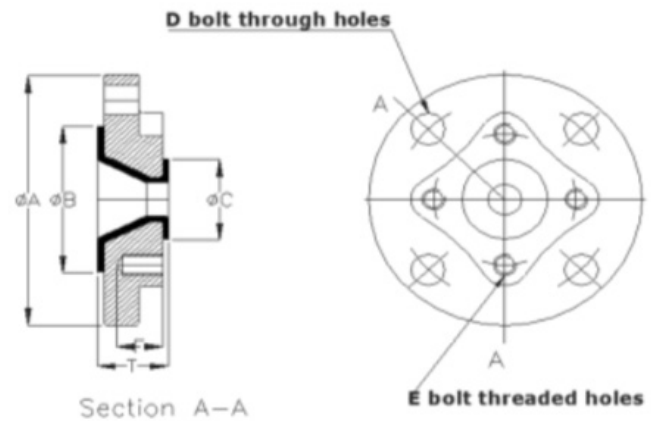
FABRICATION :

- Revêtement PTFE et test selon ASTM F1545 (2009)
- Tuyau acier peint de 2 couches d'oxyde époxy rouge, ou tuyau inox
- Brides fixes

| DN | Nomenclature | A | B | Epaisseur PTFE min | TL | Matière du liner | Matière du coude | Type de bride | Dépression admissible |
|-----------|----------------|-----|-----|--------------------|-----|------------------|------------------|---------------|-----------------------|
| | | mm | mm | mm | mm | | | | mmCE/*F |
| 1"1/2x 1" | LPS-1007-1.5X1 | 73 | 51 | 3.5 | 114 | PTFE | Acier | Fixe | FV/450 |
| 2"x 1" | LPS-1013-2X1 | 88 | 48 | 4 | 127 | | | | |
| 2"x 1"1/2 | LPS-1007-2X1.5 | 92 | 73 | 4.3 | 127 | | | | |
| 3"x 1" | LPS-1013-3X1 | 118 | 48 | 5 | 152 | | | | |
| 3"x 1"1/2 | LPS-1013-3X1.5 | 118 | 69 | 5 | 152 | | | | |
| 3"x 2" | LPS-1007-3X2 | 127 | 92 | 4.4 | 152 | | | | |
| 4"x 2" | LPS-1013-4X2 | 151 | 88 | 6 | 178 | | | | |
| 4"x 3" | LPS-1007-4X3 | 157 | 127 | 4.4 | 178 | | | | |
| 6"x3" | LPS-1013-6X3 | 204 | 118 | 7 | 229 | | | | |
| 6"x 4" | LPS-1007-6X4 | 216 | 151 | 5.5 | 229 | | | | |
| 8"x 4" | LPS-1013-8X4 | 256 | 151 | 8 | 279 | | | | |
| 8"x 6" | LPS-1007-8X6 | 270 | 216 | 6 | 279 | | | | |
| 10"x 6" | LPS-1013-10X6 | 312 | 204 | 6 | 305 | | | | |
| 10"x 8" | LPS-1007-10X8 | 324 | 270 | 7.5 | 305 | | | | |
| 12"x 8" | LPS-1007-12X8 | 376 | 270 | 7.5 | 356 | | | | |
| 12"x 10" | LPS-1007-12X10 | 381 | 324 | 7.5 | 356 | | | | |
| | | | | | | | | | Pas adapté au vide |

KENOVEL

BRIDE REDUCTION STYLE A



MATIERE :

- Brides : fonte A395 selon ANSI B 16.5 #150
- Revêtement Teflon® (Dupont de Nemours) selon ASTM D4894

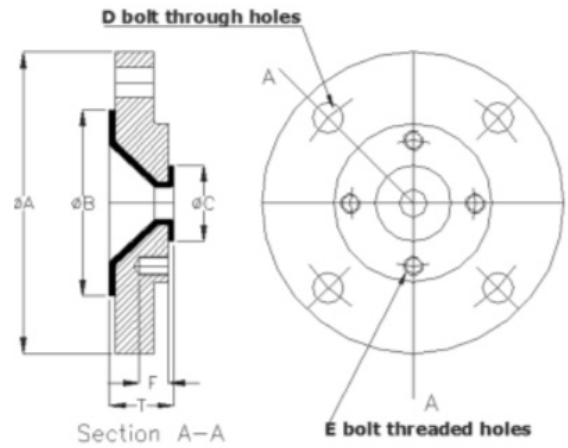
FABRICATION :

- Revêtement PTFE et test selon ASTM F1545 (2009)
- Tuyau acier peint de 2 couches d'oxyde époxy rouge, ou tuyau inox
- Brides fixes

| DN | Nomenclature | A | B | C | Trous de bride côté D | | | Trous de bride côté D | | | F | T | Dépression admissible |
|-----------|-----------------|-------|-------|-----|-----------------------|------|-------------------|-----------------------|--------|-------------------|------|------|-----------------------|
| | | | | | n | diam | cercle de perçage | n | diam | cercle de perçage | | | |
| | | mm | mm | mm | | | | | | | mm | mm | mmCE/*F |
| 1"x 1/2" | LPS-1015-1X0.5 | 108 | 51 | 35 | 4 | 5/8 | 79.4 | 4 | 1/2-13 | 60.3 | 22 | 34.7 | FV/450 |
| 1"x 3/4" | LPS-1015-1X0.75 | 108 | 51 | 43 | 4 | 5/8 | 79.4 | 4 | 1/2-13 | 69.8 | 22 | 34.7 | |
| 1"1/2x 1" | LPS-1015-1.5X1 | 127 | 73 | 51 | 4 | 5/8 | 98.4 | 4 | 1/2-13 | 79.4 | 22 | 39.7 | |
| 2"x 1" | LPS-1015-2X1 | 152.4 | 92 | 51 | 4 | 3/4 | 120.7 | 4 | 1/2-13 | 79.4 | 22 | 39.7 | |
| 2"x 1"1/2 | LPS-1015-2X1.5 | 152.4 | 92 | 73 | 4 | 3/4 | 120.7 | 4 | 1/2-13 | 98.4 | 22 | 40.2 | |
| 3"x2" | LPS-1015-3X2 | 190.5 | 127 | 92 | 4 | 3/4 | 152.4 | 4 | 5/8-11 | 120.7 | 22 | 44.5 | |
| 4"x 3" | LPS-1015-4X3 | 228.6 | 157 | 127 | 8 | 3/4 | 190.4 | 4 | 5/8-11 | 152.4 | 22 | 44.5 | |
| 6"x 4" | LPS-1015-6X4 | 279.4 | 216 | 157 | 8 | 7/8 | 241.3 | 8 | 5/8-11 | 190.5 | 22 | 47.7 | |
| 8"x 6" | LPS-1015-8X6 | 343 | 270 | 216 | 8 | 7/8 | 298.5 | 8 | 3/4-10 | 241.3 | 28.6 | 50.8 | FV/212 |
| 10"x 6" | LPS-1015-10X6 | 406.4 | 323.8 | 216 | 12 | 1 | 362 | 8 | 3/4-10 | 241.3 | 25.4 | 60 | Pas de vide |

KENOVEL[®]

BRIDE REDUCTION STYLE B



MATIERE :

- Brides : fonte A395 selon ANSI B 16.5 #150
- Revêtement Teflon[®] (Dupont de Nemours) selon ASTM D4894

FABRICATION :

- Revêtement PTFE et test selon ASTM F1545 (2009)
- Tuyau acier peint de 2 couches d'oxyde époxy rouge, ou tuyau inox
- Brides fixes

| DN | Nomenclature | A | B | C | Trous de bride côté D | | | Trous de bride côté D | | | F | T | Dépression admissible |
|----------|----------------|-------|-----|-----|-----------------------|------|-------------------|-----------------------|--------|-------------------|----|------|-----------------------|
| | | | | | n | diam | cercle de perçage | n | diam | cercle de perçage | | | |
| | | mm | mm | mm | | | | | | | mm | mm | mmCE/*F |
| 3"x 1" | LPS-1015-3X1 | 190.5 | 127 | 51 | 4 | 3/4 | 152.4 | 4 | 1/2-13 | 79.4 | 22 | 41.3 | FV/450 |
| 3"x 1.5" | LPS-1015-3X1.5 | 190.5 | 127 | 73 | 4 | 3/4 | 152.4 | 4 | 1/2-13 | 98.4 | 22 | 41.3 | |
| 4"x 1" | LPS-1015-4X1 | 228.6 | 157 | 51 | 8 | 3/4 | 190.5 | 4 | 1/2-13 | 79.4 | 22 | 47.7 | |
| 4"x 1.5" | LPS-1015-4X1.5 | 228.6 | 157 | 73 | 8 | 3/4 | 190.5 | 4 | 1/2-13 | 98.4 | 22 | 47.7 | |
| 4"x 2" | LPS-1015-4X2 | 228.6 | 157 | 92 | 8 | 3/4 | 190.5 | 4 | 5/8-11 | 120.6 | 22 | 47.7 | |
| 6"x 2" | LPS-1015-6X2 | 279.4 | 216 | 92 | 8 | 7/8 | 241.3 | 4 | 5/8-11 | 120.6 | 22 | 47.7 | |
| 6"x 3" | LPS-1015-6X3 | 279.4 | 216 | 127 | 8 | 7/8 | 241.3 | 4 | 5/8-11 | 152.4 | 22 | 44.5 | |
| 8"x 4" | LPS-1015-8X4 | 343 | 270 | 157 | 8 | 7/8 | 298.5 | 8 | 5/8-11 | 190.5 | 22 | 50.8 | FV/212 |